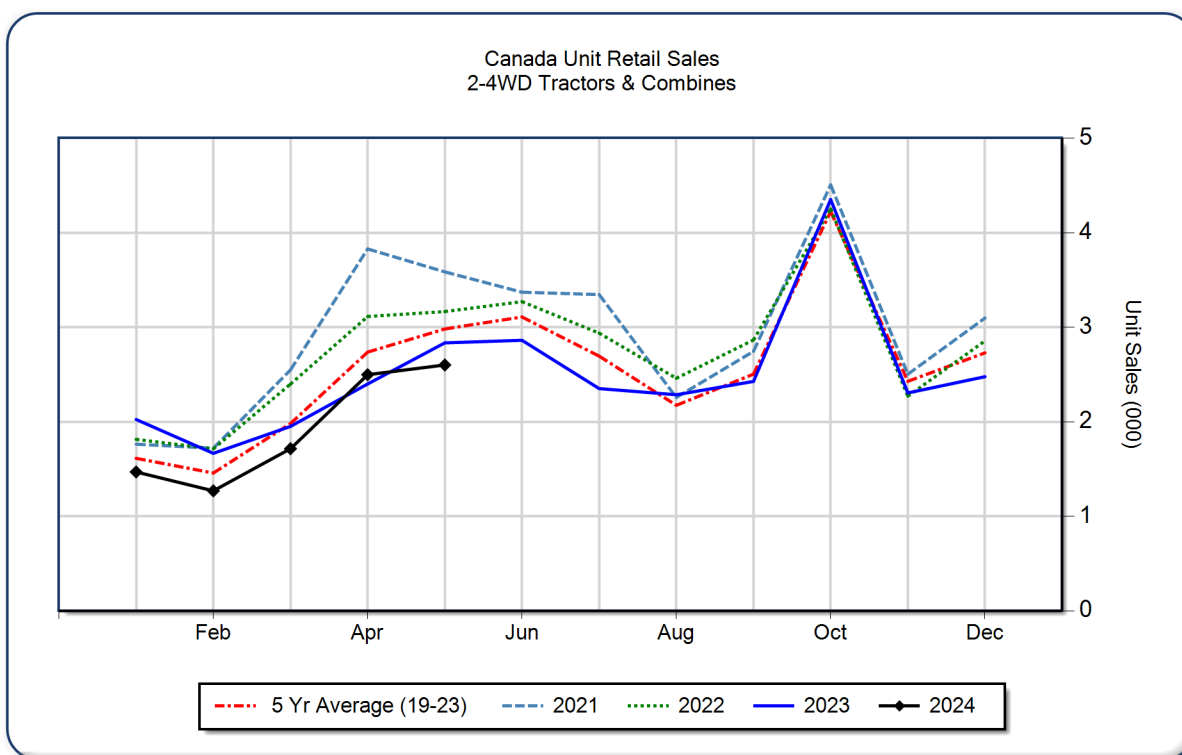


AEM Canada Ag Tractor and Combine Report May 2024

Copyright, AEM. All rights reserved. If data is referenced, please acknowledge AEM as the source.

	May			YTD - May			Beginning Inventory May 2024
	2024	2023	%Chg	2024	2023	%Chg	
2WD Farm Tractors							
< 40 HP	1,735	1,824	-4.9	5,332	6,111	-12.7	11,596
40 < 100 HP	341	468	-27.1	1,630	2,234	-27.0	4,276
100+ HP	291	362	-19.6	1,352	1,475	-8.3	2,355
Total 2WD Farm Tractors	2,367	2,654	-10.8	8,314	9,820	-15.3	18,227
4WD Farm Tractors	74	80	-7.5	406	384	5.7	135
Total Farm Tractors	2,441	2,734	-10.7	8,720	10,204	-14.5	18,362
Self-Prop Combines	160	101	58.4	832	672	23.8	401



The AEM Ag Tractor and Combine Report is provided monthly and is derived from AEM member companies through proprietary statistical reporting programs. The data is provided by AEM members and represents preliminary monthly retail sales of Ag equipment. Separate reports are available for the U.S., Canada and Russia. For more information, please visit: <https://www.aem.org/market-share-statistics/us-ag-tractor-and-combine-reports>. **Attention Media:** To speak with an AEM spokesperson about the data, please contact Sandra Mason at smason@aem.org.